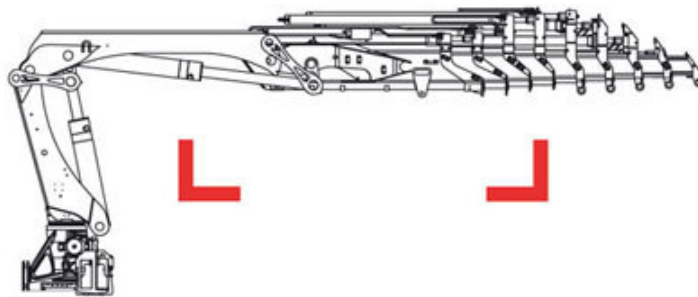
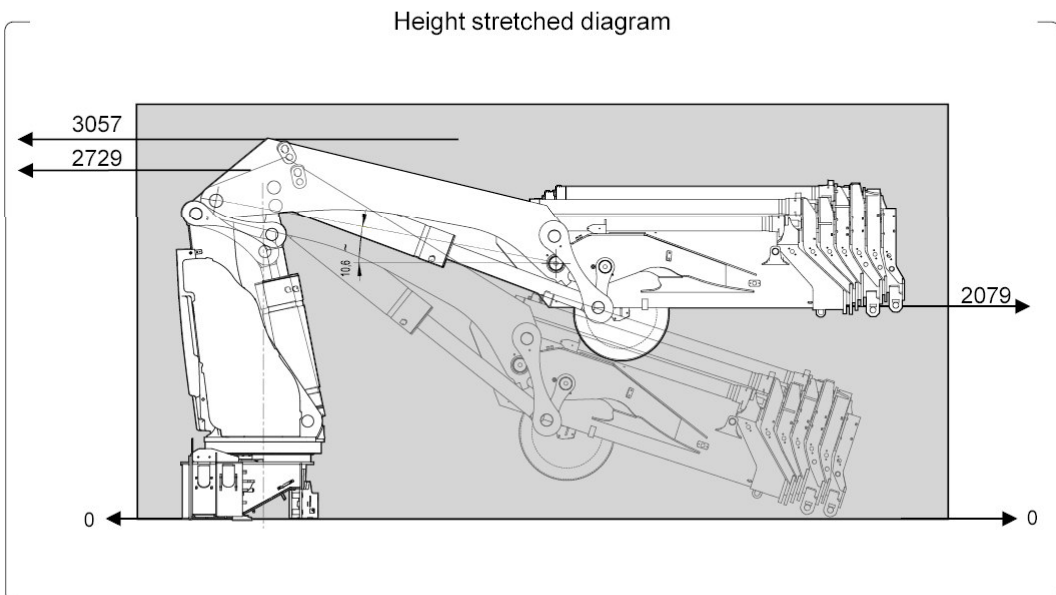
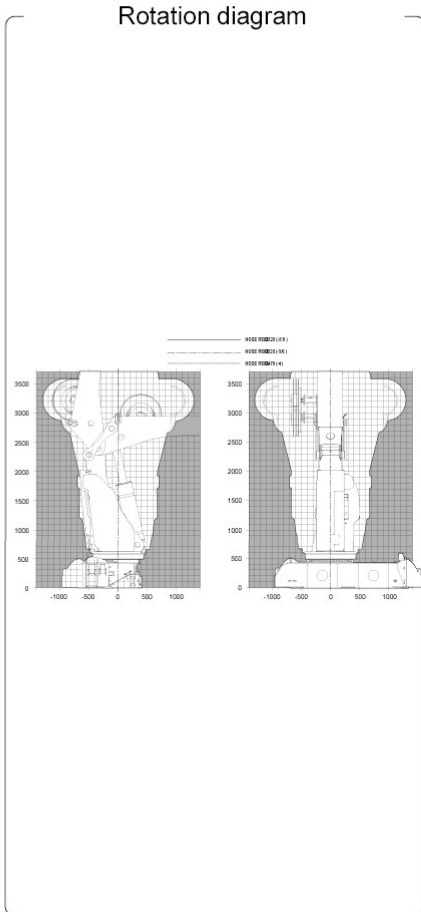
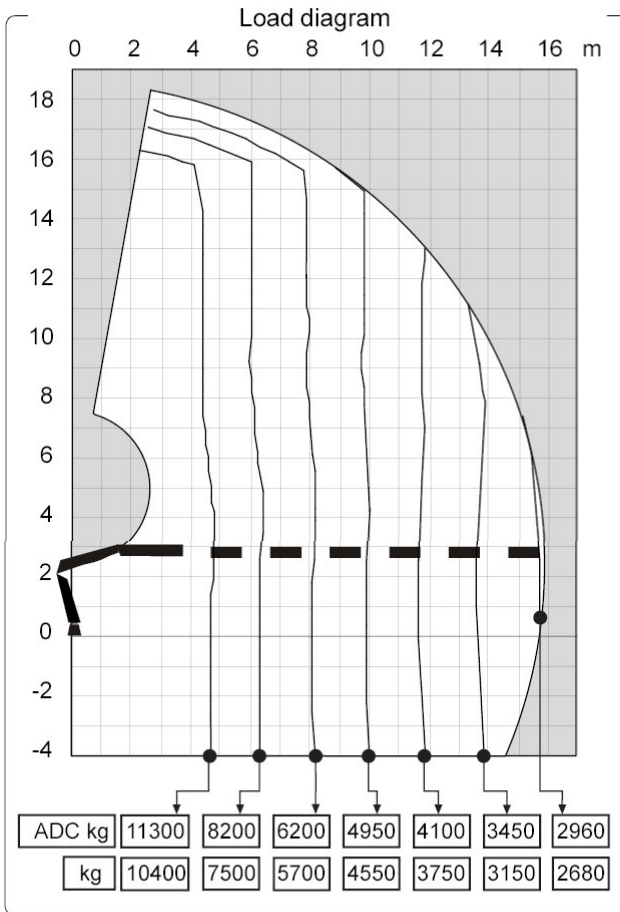


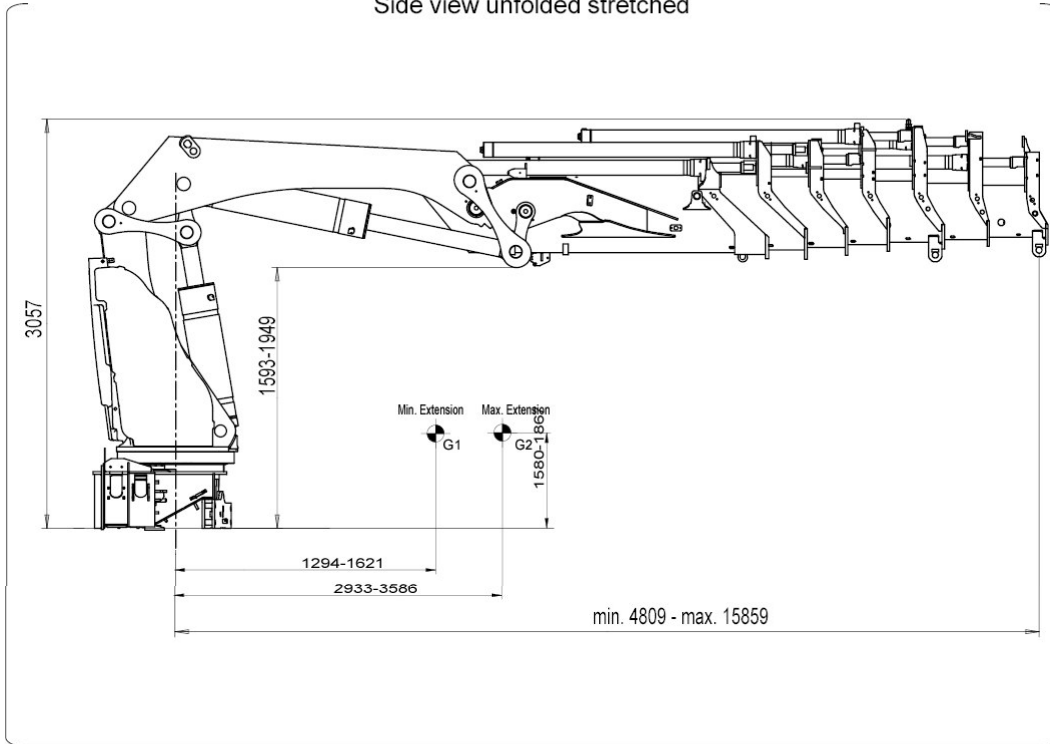
HIAB 622 E-6 HiPro



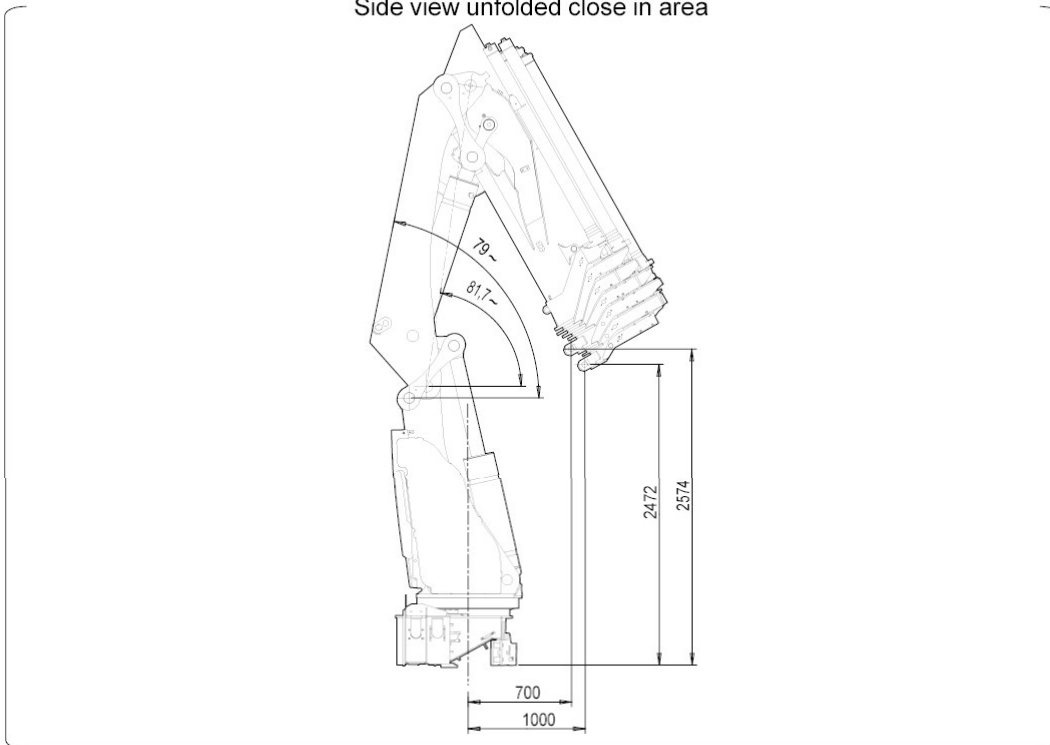
Technical Data



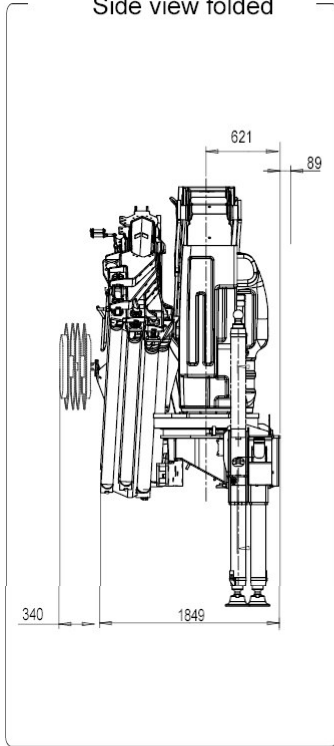
Side view unfolded stretched



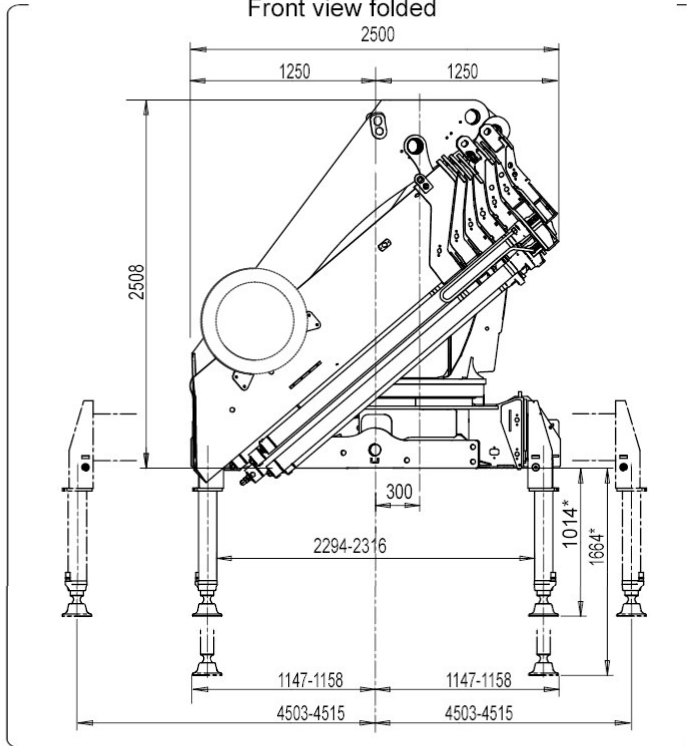
Side view unfolded close in area



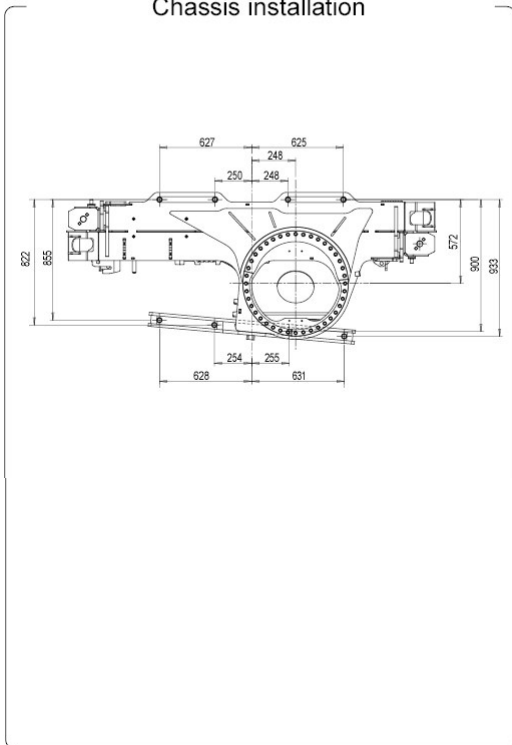
Side view folded



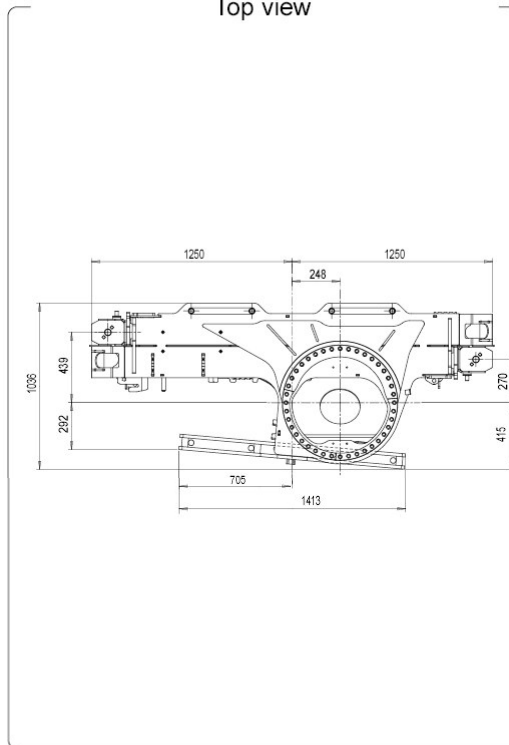
Front view folded



Chassis installation



Top view



Version

HIAB 622 E-6 HiPro

 M_{dyn}

Lifting capacity	kNm	490
Lifting capacity	tm	50.0
Lifting capacity (ADC)	kNm	530
Lifting capacity (ADC)	tm	54.0
Outreach - lifting capacity, standard	m-kg	2.0 - 22,000
		4.8 - 11,300
		6.4 - 8,200
		8.1 - 6,200
		9.9 - 4,950
		11.7 - 4,100
		13.7 - 3,450
	15.8 - 2,960	

Outreach - lifting capacity, manual extensions	m-kg	
Hydraulic outreach, standard	m	15.8
Hydraulic boom extension	m	11.1 m
Outreach, manual extensions	m	0.0
Lifting height above installation level, hydr/man	m	18.5 / 0.0
Rec. oil flow	l/min	100 - 120
Power needed at rec. oil flow V80	kW	-
Power needed at rec. oil flow V91	kW	-
Working pressure	Mpa	37.0
Oil in tank	l	0 - 300
Tank capacity	l	0 - 340
Slewing angle	∅	0 - 0
Max slope viable at full capacity	°	5
Slewing torque, gross	kNm	54.0
Slewing speed 80	°/s	10
Slewing speed	°/s	10
Lifting speed at standard hydraulic outreach	m/s	0.2
Height in folded position	mm	2,508
Width in folded position	mm	2,500
Install space required. Rotation area not included	mm	1,849
Install space required with hose and pipe kit	mm	2,189

Weight

Crane in standard version without support legs	kg	5,600
Top seat	kg	0
Frame attachments	kg	78 - 123
Support leg equipment	kg	962 - 1,101

Data sheet

HIAB 622 E-6 HiPro